



# The Element

— *by Anocha* —

Kamala - Phuket

\*COMPUTER GENERATED IMAGE



LUXURY LIVING REDEFINED AT THE ELEMENT



# The Element

— *by Anocha* —

## PHUKET PLUS CO., LTD: PIONEERS IN LUXURY DEVELOPMENTS SINCE 2006

Founded by Mr. Manusanan Nararatwanchai in 2006, Phuket Plus Co., Ltd were the pioneers in developing and designing luxury condominiums and villas on Phuket's west coast, focusing on the prime districts of Kamala and Cherngtalay. With over 50 successful projects completed across Thailand, the company has built a strong reputation for excellence in real estate development.

This track record includes some of the most renowned developments including Oceana, Icon Park, Zen Space, The Trees Residence, Lake Town, Prime Pano, and Prime Villas. Phuket Plus continues to set the standard for luxury living on the island.

Anocha Property, led by Managing Director Mr. Anocha Paochinda, has successfully developed 6 major projects in Phuket, valued at over 1,400 million Baht. Specializing in condominiums, townhouses, and single houses, Anocha Property is a trusted Phuket-based brand that understands the true needs of homeowners.

\*COMPUTER GENERATED IMAGE





The Element  
— *by Anocha* —

## ESCAPE TO QUIET ELEGANCE; BEACH, MOUNTAINS, COMMUNITY

Discover The Element, nestled in a prime and peaceful location in Kamala on Phuket's western coast. Here you will find stunning forested mountain views away from busy roads and yet just minutes from the beach, local shops and restaurants.

Kamala offers a perfect blend of natural beauty, tranquil living and modern comforts. Known for its pristine beach and stunning surrounding mountains, Kamala provides a lifestyle that is both relaxing and enriching.

Kamala Beach, with its soft white sand and crystal-clear waters, is ideal for morning walks and exercise, sunbathing, or simply a swim to start your day. Beyond the beach, you will feel at home in Kamala's vibrant, yet intimate community.

Surin, Laguna and Patong are all within easy reach and offer an abundance of complimentary activities.

But it's not just the location; it's the Lifestyle. The Element offers a select few the chance to enjoy premium amenities in a peaceful, secluded setting. With only 278 luxury units spread across four residential blocks, you'll experience privacy and exclusive facilities unlike any other.

The Element redefines what it means to experience luxury. Secure your own place in this tranquil paradise and join a select community that promises an elevated, active lifestyle.

COMPUTER GENERATED IMAGE





The Element  
— *by Anocha* —

## LUXURY LIVING REDEFINED

Welcome to The Element by Anocha, where the art of luxury living is redefined. Located just minutes from Kamala Beach, this exclusive community for the privileged few features 278 meticulously designed units set amidst a tranquil environment, offering breathtaking mountain views.

The Element introduces Kamala's most modern condo concept, with unit sizes ranging from stylish 29.87m<sup>2</sup> spaces to expansive 168.61m<sup>2</sup> penthouses complete with private pools all on over 12,240m<sup>2</sup> of prime natural land.

Exclusive to only a select few, the premium facilities are extraordinary and exciting. Enjoy double swimming pools set within lush, landscaped gardens that line each building, a state-of-the-art Muay Thai-themed gym, fitness centre, tennis court, sauna, business hub, marketplace shop with open plan kitchen facilities, a beauty salon with nail spa and more.

At The Element, experience the perfect blend of modern luxury and exclusive living within a community that offers unmatched amenities.

## PROJECT INFORMATION

<b>Total Land Size</b>	12,242.50 SQ.M.
<b>Total Units</b>	278 Units
<b>Location</b>	Kamala, Phuket
<b>Project Type</b>	Low Rise Condominium 4 Buildings (7 Floors)

### Unit Types

- Type A : 1 Bedroom
- Type B : 2 Bedroom
- Type C : 1 Bedroom with Private Pool
- Type D : 2 Bedroom with Private Pool
- Type E : 2 Bedroom Master PH with Private Pool

### Facilities

Anocha Muay-Thai Style Gym, Fitness Center, Tennis Court, Yoga, Cafe', Co-Kitchen space, Market Place, Kids Playground, Sauna Room, Beauty Salon, Business Hub, Pool, Lobby and CCTV 24 Hours

  
The Element  
— by Anocha —







\*COMPUTER GENERATED IMAGE



## FACILITIES

- Leisure pool
- Anocha Muay Thai & Boxing Gym
- Fitness Center
- Yoga
- Tennis Court
- Cafe'
- Co-Kitchen space
- Market Place
- Kids Playground
- Sauna Room
- Beauty Salon & Nail Spa
- Business Hub
- Lobby
- CCTV 24 Hours

  
The Element  
— by Anocha —



\*COMPUTER GENERATED IMAGE



MORE THAN A WORKOUT, ITS A LIFESTYLE

\*COMPUTER GENERATED IMAGE



LUXURY LIVING WITH WELLNESS AND BEAUTY JUST STEPS AWAY



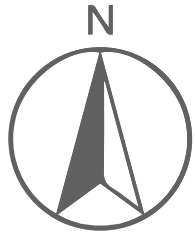
BALANCE LIFE AND WORK WITH EASE

\*COMPUTER GENERATED IMAGE



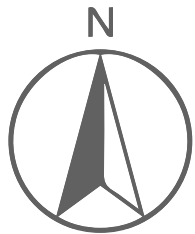
# MASTER PLAN

- TYPE A
- TYPE B
- TYPE C
- TYPE D
- TYPE E



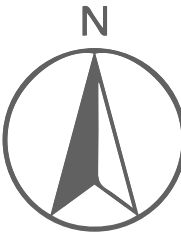
# 2nd FLOOR PLAN

- TYPE A
- TYPE B
- TYPE C
- TYPE D
- TYPE E



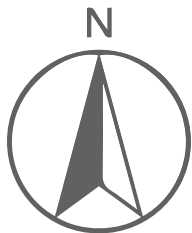
# 3rd FLOOR PLAN

- TYPE A
- TYPE B
- TYPE C
- TYPE D
- TYPE E



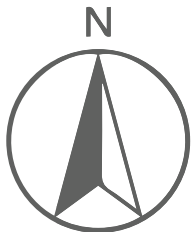
# 4th FLOOR PLAN

- TYPE A
- TYPE B
- TYPE C
- TYPE D
- TYPE E



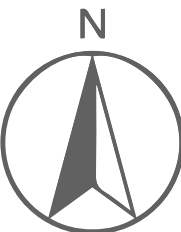
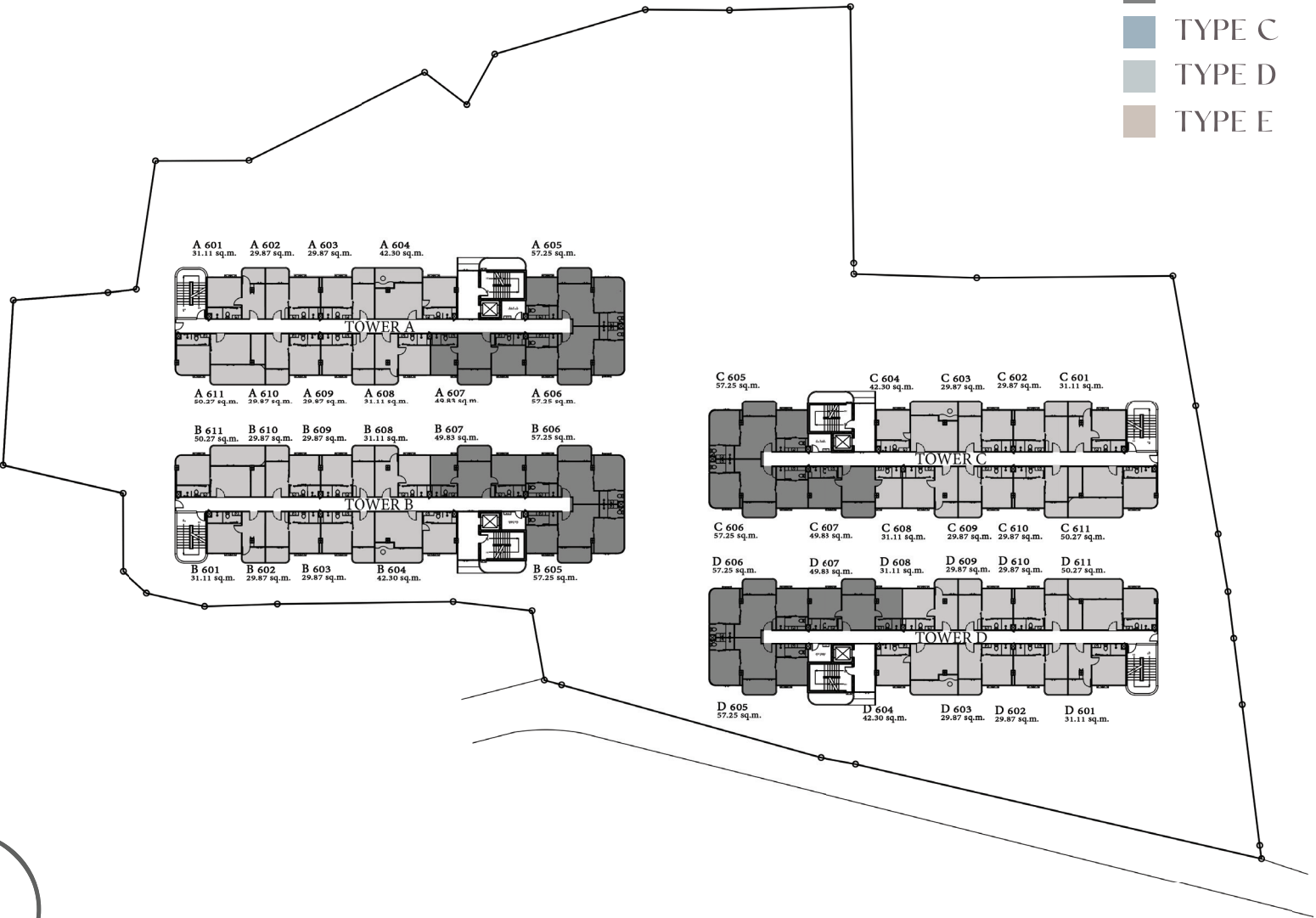
# 5th FLOOR PLAN

- TYPE A
- TYPE B
- TYPE C
- TYPE D
- TYPE E



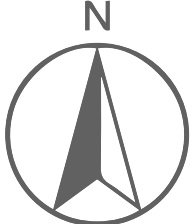
# 6th FLOOR PLAN

- TYPE A
- TYPE B
- TYPE C
- TYPE D
- TYPE E

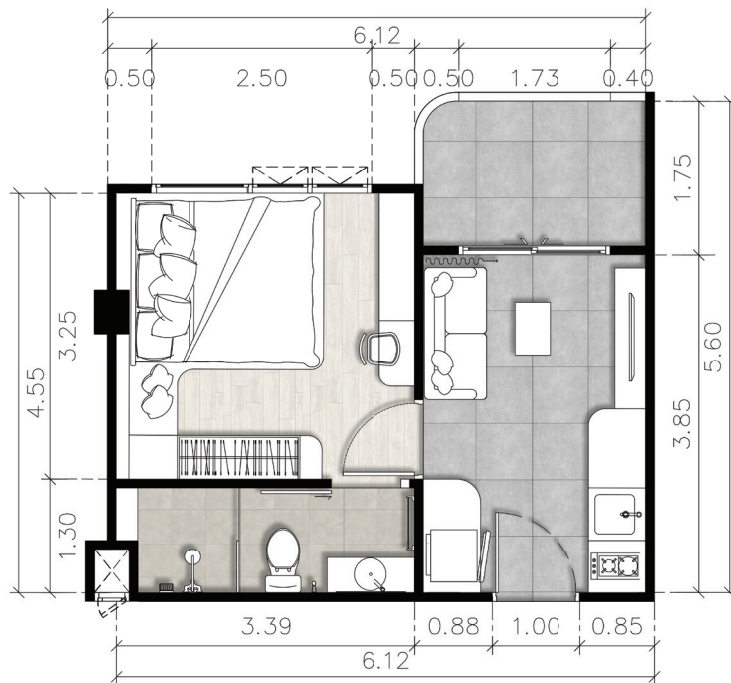


# 7th FLOOR PLAN

- TYPE A
- TYPE B
- TYPE C
- TYPE D
- TYPE E

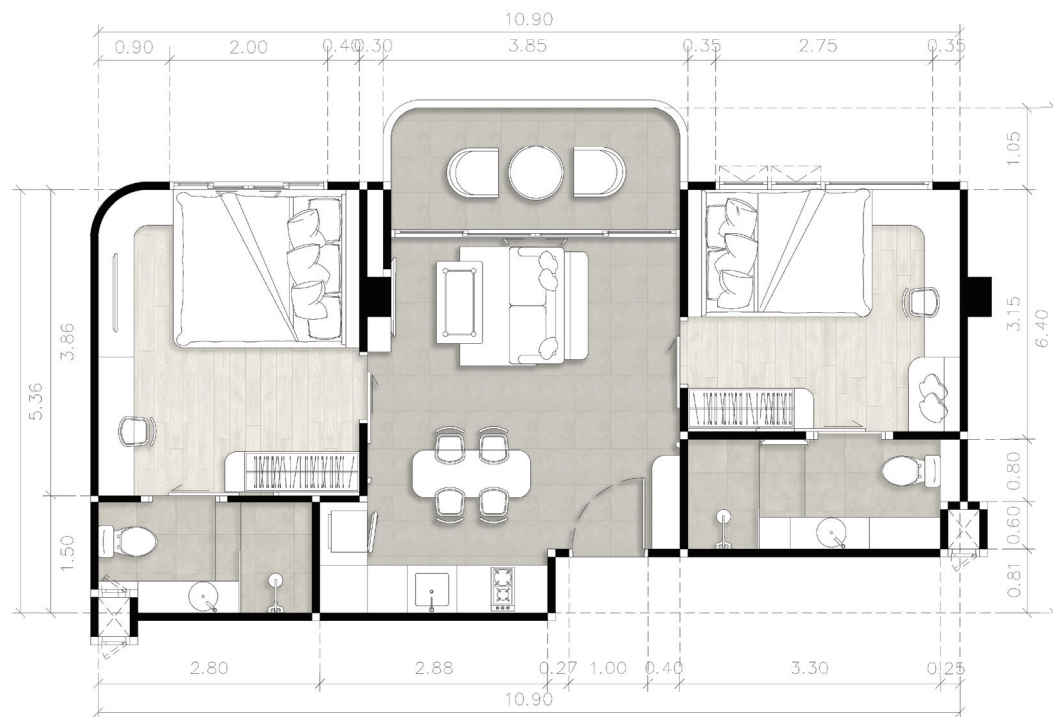


COMPUTER GENERATED IMAGE



## TYPE A 1-Bedroom

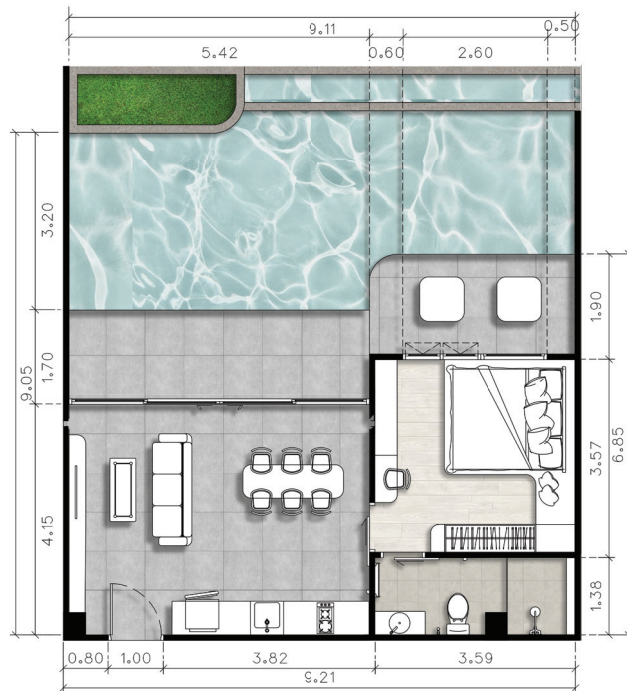
BEDROOM	10.94 SQ.M.
BATHROOM	9.86 SQ.M.
KITCHEN - LIVING	8.57 SQ.M.
TERRACE	5.40 SQ.M.
<b>TOTAL AREA</b>	<b>29.87 SQ.M.</b>



## TYPE B 2-Bedroom

BEDROOM 1	12.73 SQ.M.
BATHROOM 1	3.65 SQ.M.
BEDROOM 2	10.60 SQ.M.
BATHROOM 2	4.70 SQ.M.
KITCHEN- LIVING	16.24 SQ.M.
TERRACE	7.42 SQ.M.
<b>TOTAL AREA</b>	<b>57.25 SQ.M.</b>

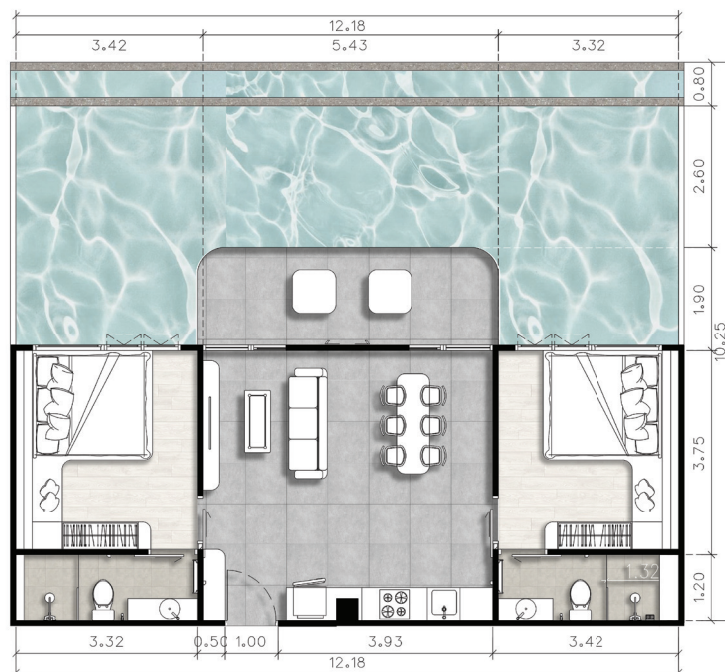
\*COMPUTER-GENERATED IMAGE



## TYPE C

### 1-Bedroom Private Pool

BEDROOM	12.63 SQ.M.
BATHROOM	4.80 SQ.M.
KITCHEN-LIVING-DINING	20.30 SQ.M.
POOL-TERRACE	45.40 SQ.M.
TOTAL AREA	92.61 SQ.M.



## TYPE D

### 2-Bedroom Private Pool

BEDROOM 1	12.21 SQ.M.
BATHROOM 1	3.98 SQ.M.
BEDROOM 2	12.21 SQ.M.
BATHROOM 2	3.98 SQ.M.
KITCHEN-LIVING-DINING	26.35 SQ.M.
PROL-TERRACE	54.44 SQ.M.
<b>TOTAL AREA</b>	<b>124.74 SQ.M.</b>

\*COMPUTER GENERATED IMAGE



## TYPE E

### Master Penthouse Private Pool

KITCHEN-LIVING-DINING 45.62 SQ.M.

BEDROOM 1 10.77 SQ.M.

BATHROOM 1 4.86 SQ.M.

BEDROOM 2 11.84 SQ.M.

BATHROOM 2 5.58 SQ.M.

TERRACE 41.46 SQ.M.

TOTAL AREA 168.61 SQ.M.



MASTER PENTHOUSE



**DEPARTMENT STORES & LIFESTYLE SHOPPING MALL**

Villa Market Kamala	5 min
Big C Kamala	6 min
Porto De Phuket	17 min
Boat Avenue	17 min
Central Patong	20 min
Jungeeylon Patong	20 min
Central Phuket	30 min

**BEACHES**

Kamala Beach	5 min
Patong Beach	18 min
Surin Beach	8 min
Bang Tao Beach	21 min
Layan Beach	30 min

**LEISURE & LIFESTYLE**

Laguna Golf Course	23 min
Catch Beach Club	14 min
Cafe Del Mar	4 min
Carnival Magic	4 min
Kagadee Wellness	5 min
Phuket International Airport	42 min
Royal Phuket Marina	33 min
Ao Po Grand Marina	45 min

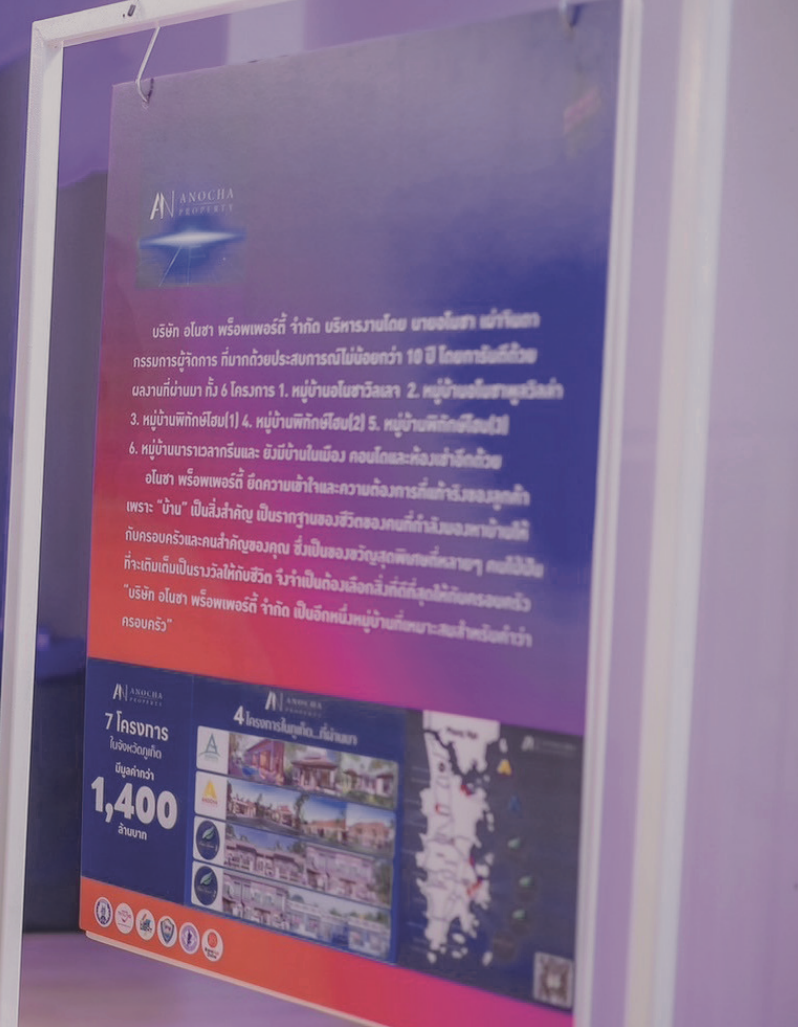
**INTERNATIONAL SCHOOL**

Headstart International School	21 min
UWC Thailand International School	40 min
Finnway International School	30 min
British International School	35 min
Buds International School	45 min

**HOSPITALS**

Patong Hospital	21 min
Bangkok Hospital	40 min
Vachira Phuket Hospital	30 min
Thalang Hospital	35 min
Bumrungrad International Hospital (Up Coming)	45 min

\*COMPUTER GENERATED IMAGE



# DEVELOPER



## The Element

— by Anocha —

### ANOCHA PROJECTS

- Pitak Home 1 Village - Completed
- Pitak Home 2 Village - Completed
- Pitak Home 3 Village - Completed
- Anocha Village - Completed
- Anocha Pool Villas - Completed
- Naravel Green - Completed
- The Cus Condominium - Under construction

**7 PROJECTS**  
**IN PHUKET**  
**VALUE**  
**1,400**  
**MB.**





# The Element

— *by Arocha* —

Kamala - Phuket

+66 81 539 8118 , +66 99 259 6525, +66 85 - 562 1146  
[www.theelementcondo.com](http://www.theelementcondo.com)